

LOW FREQUENCY REFLOWABLE CYLINDRICAL WATCH CRYSTAL



6.0 x ϕ 1.9mm

AB26TRB

Pb in high temperature solder
(exempt 7(a) per 2015/863/EU Annex)

RoHS
Compliant

FEATURES:

- Formed leads for low cost SMD type
- Excellent shock resistance
- Reflow Capable
- Low cost for consumer applications
- IR reflow capable

APPLICATIONS:

- Real time clock
- Measuring instruments
- Blue-tooth and wireless applications

STANDARD SPECIFICATIONS:

Parameters	Minimum	Typical	Maximum	Units	Notes
Center Frequency		32.768		kHz	
Operating Temperature	-40		+85	°C	
Turnover Temperature	+20	+25	+30	°C	
Storage Temperature	-55		+125	°C	
Frequency Tolerance @+25°C	-20		+20	ppm	See options
Frequency Coefficient (β)		-0.035 \pm 0.01		ppm/°C ²	
Equivalent series resistance (R1)		35	50	k Ω	@25°C
Shunt capacitance (C0)		1.35		pF	
Load capacitance (CL)		12.5		pF	See options
Drive Level			1	μ W	
Quality Factor		70,000			
Aging	-3		+3	ppm	@25°C \pm 3°C First year
Insulation Resistance	500			M Ω	@ 100Vdc \pm 15V

OPTIONS & PART IDENTIFICATION: (Left blank if standard)

AB26TRB-32.768kHz - - -

Load Capacitance (pF)
Blank: 12.5pF
6: 6pF
10: 10pF

Freq. Tolerance
Blank: \pm 20 ppm
1: \pm 10 ppm
7: \pm 15 ppm

Packaging
Blank: Bulk
T: Tape & Reel

LOW FREQUENCY REFLOWABLE CYLINDRICAL WATCH CRYSTAL



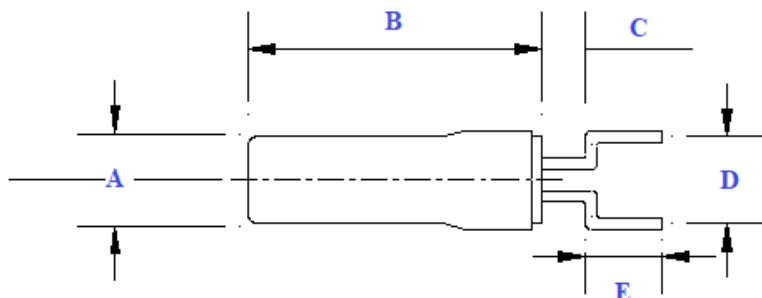
6.0 x ϕ 1.9mm

AB26TRB

Pb in high temperature solder
(exempt 7(a) per 2015/863/EU Annex)

RoHS
Compliant

OUTLINE DIMENSIONS:

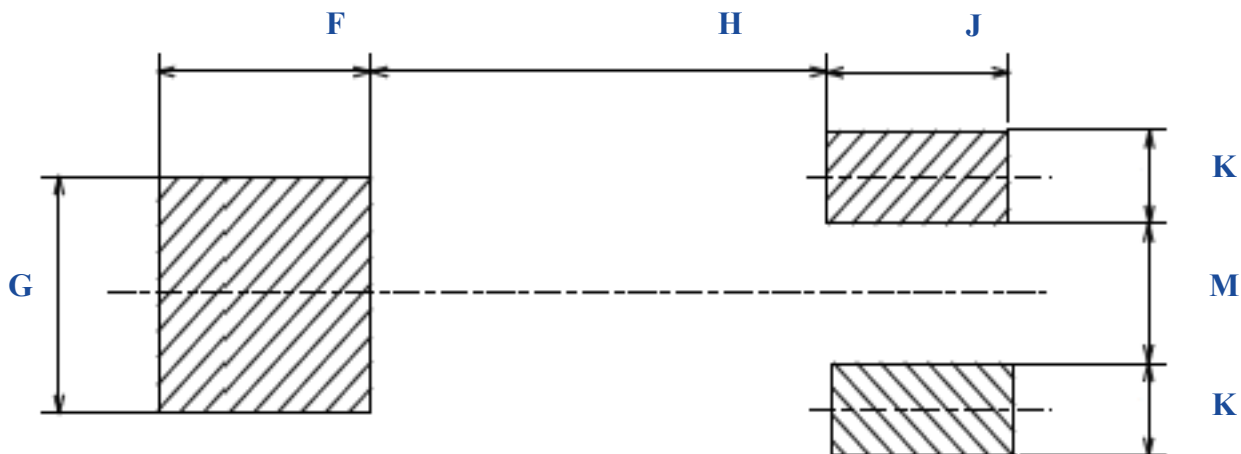


Dimension Table	
A	$\text{Ø } 1.9 \pm 0.1$
B	6.0 ± 0.2
C	1.0
D	2.54 ± 0.3
E	2.0 ± 0.3

NOTE:

The body/can of the component is not to be soldered. To do so may cause damage to the crystal.

Use Adhesive/Bonding Materials (i.e. Rubber Adhesive, Epoxy, etc) to affix the component body to the PCB.



F	G	H	J	K	M
2.5	2.5	5.25	2.5	1.0	1.5

Dimensions: mm

LOW FREQUENCY REFLOWABLE CYLINDRICAL WATCH CRYSTAL



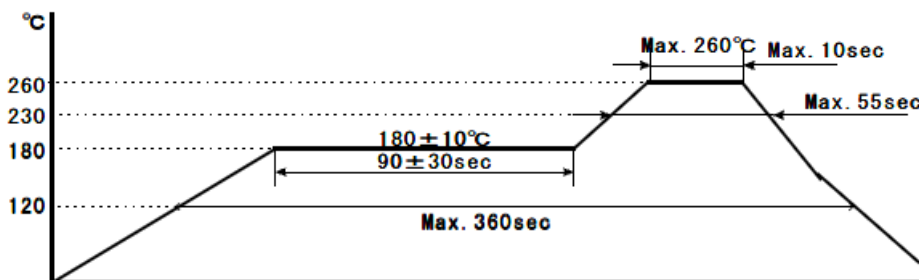
6.0 x ϕ 1.9mm

AB26TRB

Pb in high temperature solder
(exempt 7(a) per 2015/863/EU Annex)

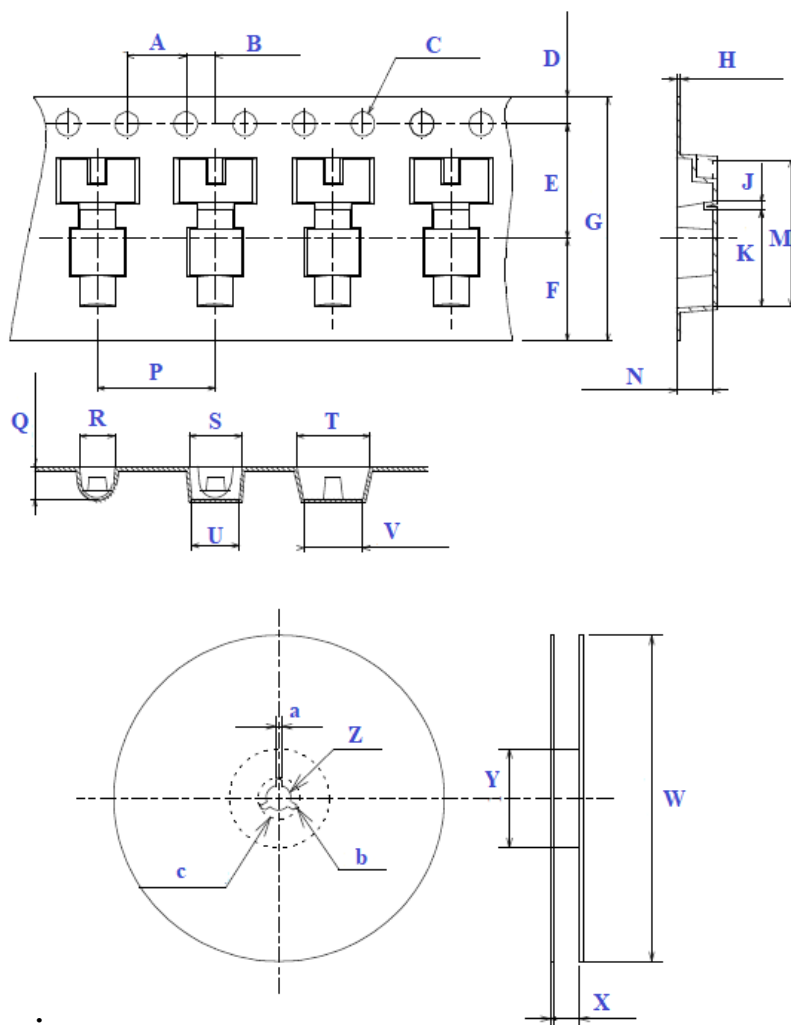
RoHS
Compliant

REFLOW PROFILE:



TAPE & REEL:

Packaging: 2000pcs/reel



Dimensions: mm

Dimension Table

A	4.0 ± 0.1
B	2.0 ± 0.1
C	Ø 1.5 ± 0.1
D	1.75 ± 0.1
E	7.5 ± 0.1
F	(6.75)
H	0.3 ± 0.05
G	16 ± 0.3
J	0.6
K	6.3 ± 0.1
M	9.4
N	2.15 ± 0.1
P	8.0 ± 0.1
Q	2.15 ± 0.1
R	2.05
S	3.6
T	5.0
U	3.2
V	4.0 ± 0.1
W	Ø 330
X	19.5
Y	Ø 100
Z	Ø 13
a	2.0
b	R1.0
c	Ø 21 ± 0.8

ATTENTION: Abracon LLC's products are COTS – Commercial-Off-The-Shelf products; suitable for Commercial, Industrial and, where designated, Automotive Applications. Abracon's products are not specifically designed for Military, Aviation, Aerospace, Life-dependent Medical applications or any application requiring high reliability where component failure could result in loss of life and/or property. For applications requiring high reliability and/or presenting an extreme operating environment, written consent and authorization from Abracon LLC is required. Please contact Abracon LLC for more information.